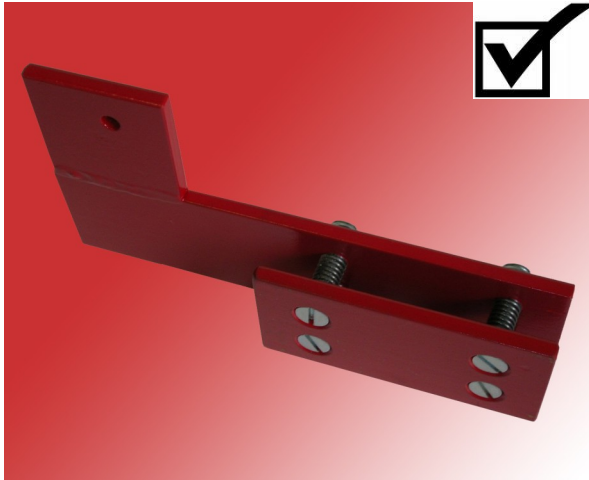


Automec Easygage Features

Make the EASYGAGE Work For You



Shock Absorber:

Spring-loaded adjustable tension shock absorber mounts in place of standard stop to absorb impact from loading work pieces.



8' Solid Table:

Constructed of 1/8" steel. Use 1 or 2 support legs as needed. Tables are 12" wide and can be bolted together for longer lengths.



RS232 Interface:

Allows programs to be written at a PC and downloaded to the EASYGAGE or programs can be written at the EASYGAGE. Includes software on 3.5 floppy. (order pigtail cable for RS232 connection to PC)



Output Relay, Socket and Cable:

Use this 24V relay to fire an external device like a saw, punch or ready light. The relay fires when the EASYGAGE reaches position. **NOTE:** When BOTH an Auto Advance Switch and Output Relay are ordered, a single cable feeds both devices from the EASYGAGE control.



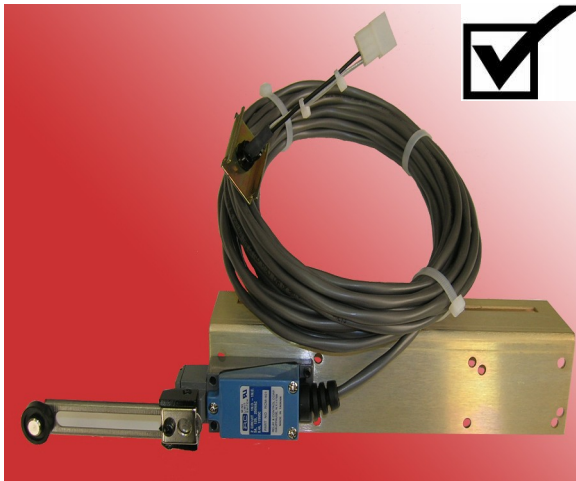
10' Roller Table:

10" wide, 12 gauge powder coated frame. 1.9" rollers on 3" centers. The EASYGAGE drive is mounted to the table when ordered. Tables can be linked to each other and mounted on the opposite side of the sawing device for feeding or off-loading. Capacity is 350 lbs. per section. Order one set of support legs if table is to be mounted to your device or two sets if table is free standing.



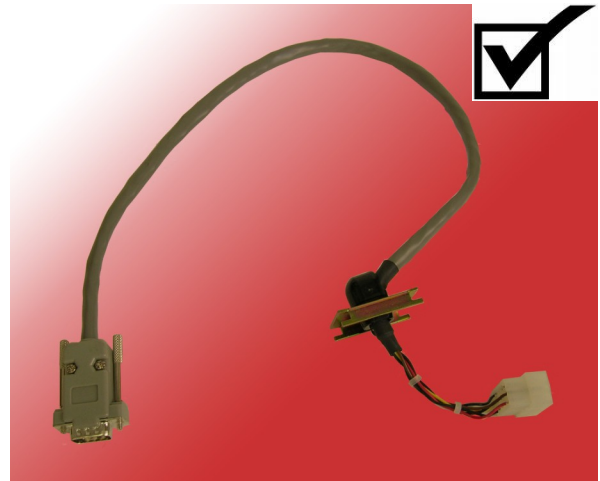
Scanner Package:

Includes barcode scanner and barcode scanner interface. Allows cut lists to be scanned directly into the EASYGAGE control. Dimensions can be scanned individually or in groups for sequential moves. A "scan and go" mode sends the EASYGAGE to position automatically each time the scanner is triggered.



Auto Advance Switch and Cable:

Used for sequential positioning. Mount this on the up-action of the punch or saw to advance the EASYGAGE on each cycle.



Pigtail cable for RS232 Connection:

16" cable with connection to EASYGAGE control on one end and DB-9 male connection to PC at other end.

AUTOMEC

AUTOMEC, INC. 82 Calvary Street, Waltham, MA 02453
Telephone: 781-893-3403 Fax: 781-899-5708 E-mail: sales@automec.com
Website: www.automec.com