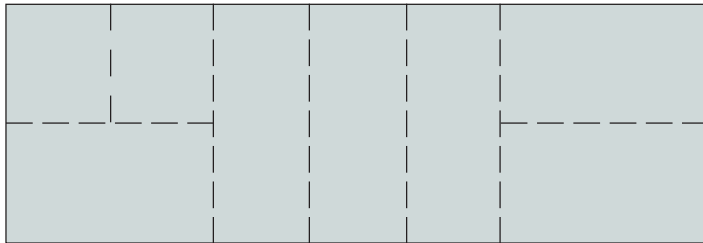


SQUAREGAGE PLUS

FEATURES

- All three drives can be programmed independently for angle cutting.
- Slope angle can be programmed in degrees and the software will calculate the position of each drive unit.
- Dimensions can be programmed in Absolute or Incremental for repeating dimensions or patterns.
- All electronics housed in the compact display unit.
- RS 232 interface with software included
- In/mm conversion.
- Parts counter
- 300 job memory.
- Job storage with up to 11-digit job number.
- 10 cuts per job.
- Jobs can be linked together for larger programs.

MATERIAL SAVINGS



The sequential movement of SQUAREGAGE means different size blanks can be effectively sheared from a large blank to maximize material utilization.

SPECIFICATIONS

Speed	600IPM
Repeatability	±.002"
Accuracy	±.005"
Sheet Capacity	4' x 10' x 3/8" CRS
Holding Force	200 lbs. per drive
Input Power	115VAC ±10%
Operating Temperature	32°F-120°F
Resolution	.001"
Gauge Delay	Up to 9 Seconds
Inch/mm Conversion	Yes
Gauge Range	72", 120" or 144"

I/O RS232 INTERFACE INCLUDED

A bi-directional 2-way communication system for uploading and downloading Automec gauging systems.

- Offers large storage capacity for cut sequences.
- Reduces operator programming time.
- Reduces errors caused by manual data input.
- Provides output of job sequence to aid the operator.
- Provides listing of all jobs in computer memory.

AUTOMECH

82 CALVARY STREET
WALTHAM, MA 02453-5918

Telephone: 781-893-3403 • Fax: 781-899-5708
E-mail: sales@automec.com

WEBSITE: WWW.AUTOMECH.COM

