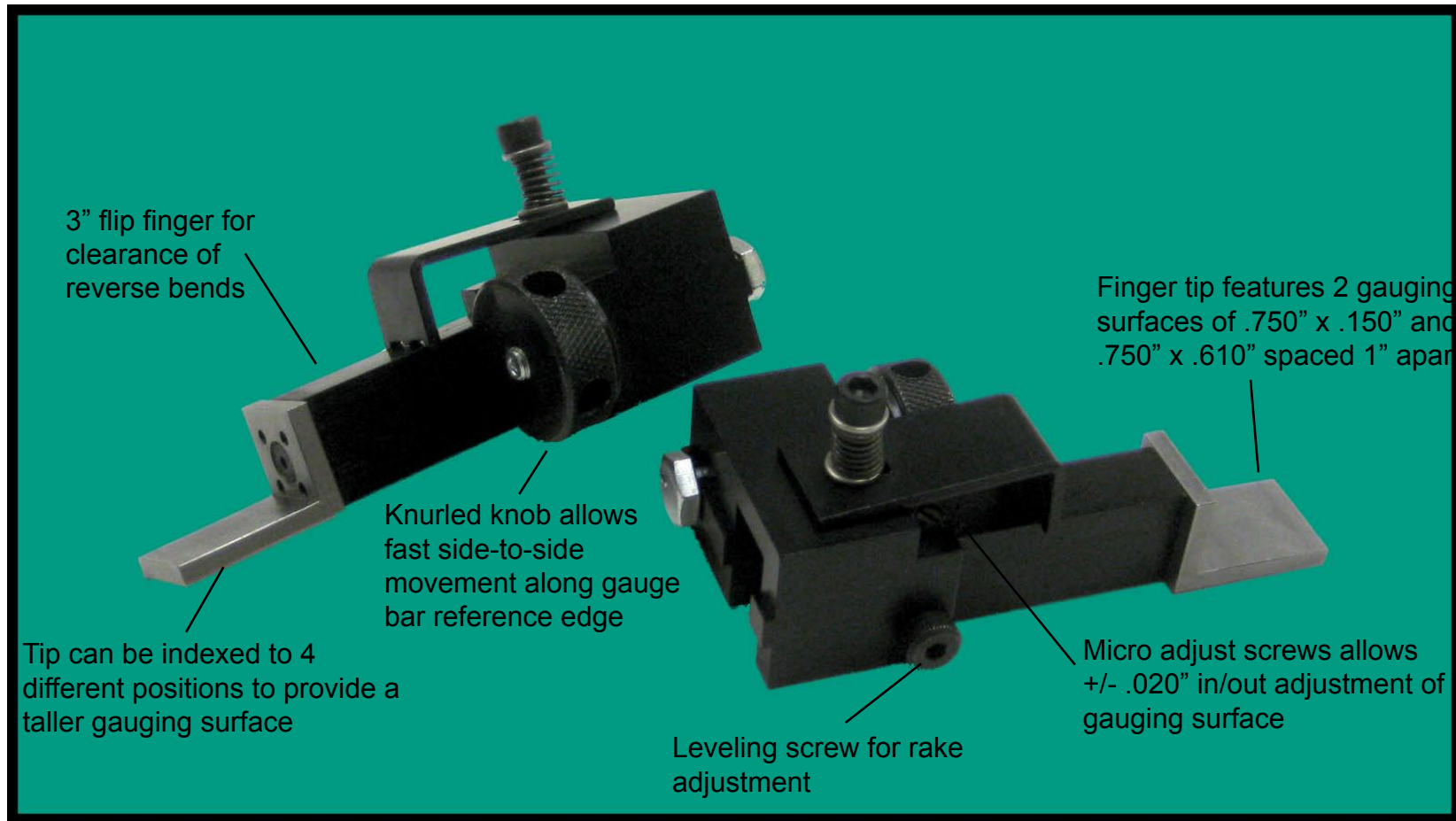


GF-1 MICRO-ADJUST FINGER



Part #: GF-1

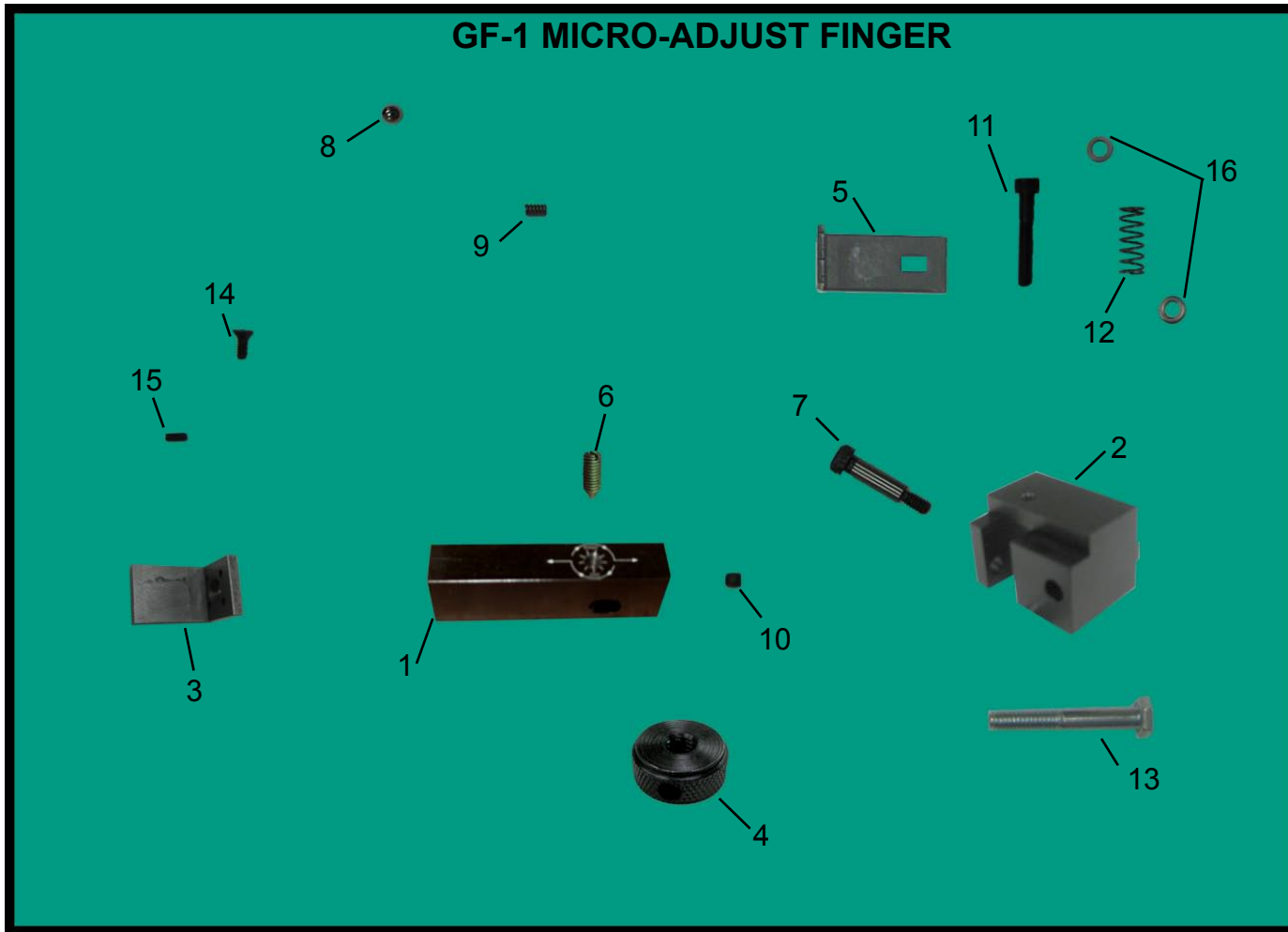
Mounting: Mount in T-slot on machined face of gauge bar using T-nut and knurled knob. Drill backgauge mounting holes 7" below top of lowest die for use of this finger.

Tel. (781) 389-3403
Fax. (781) 899-5708
www.automec.com

AUTOMECH

82 Calvary Street, Waltham, MA 02453

GF-1 MICRO-ADJUST FINGER



PARTS LIST

ITEM #	PART #	DESCRIPTION	ITEM #	PART #	DESCRIPTION
1	11070	FINGER	11	10 - 32 X 1¼	SOC. HEAD CAP SCREW
2	11069	FINGER BLOCK	12	06044	SPRING
3	11081	FINGER TIP	13	¼ - 20 X 1¾	HEX CAP SCREW
4	CLOKN	KNURLED KNOB	14	6 - 32 X ⅜	FLAT HEADCAP SCREW
5	SK041084	CLIP	15	3/32 X ¼	ROLLPIN
6	11082	ADJUSTING SCREW	16	NAS 620C10	FLAT WASHER
7	¼ X ¾	SHOULDER SCREW			
8	0.156 DIA.	BALL			
9	02004	SPRING			
10	10 - 32 X 3/16	SOC. SET SCREW WITH PATCH			

Tel. (781) 389-3403
 Fax. (781) 899-5708
 www.automec.com

AUTOMECC

82 Calvary Street, Waltham, MA 02453