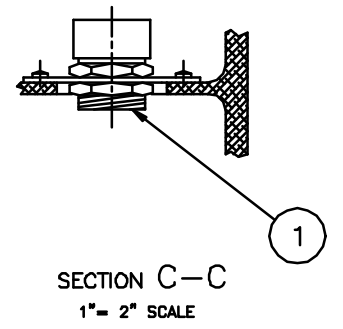
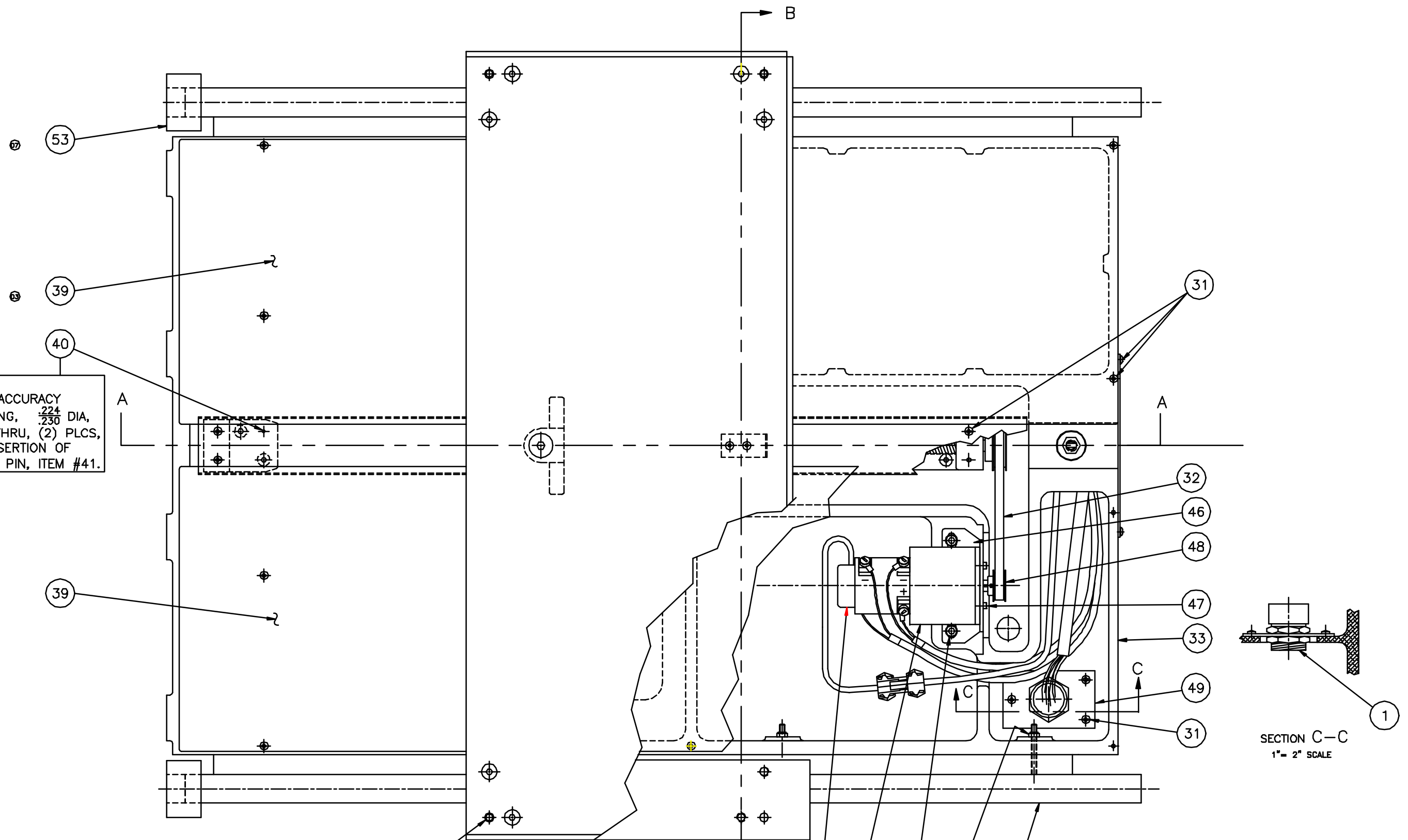


NOTE:
 AFTER ACCURACY CHECKING, $\frac{.224}{.230}$ DIA, DRILL THRU, (2) PLCS, FOR INSERTION OF SPRING PIN, ITEM #41.

NOTE:
 AFTER ACCURACY CHECK, DRILL .397 DIA X 1.0 DEEP, (4) PLACES, FOR SPRING PIN, ITEM #39.



QTY.	PART NUMBER	ITEM DESCRIPTION	ITEM
PARTS LIST			
SURFACE TREATMENT		EXCEPT AS NOTED: ALL DIMENSIONS IN INCHES TOLERANCE	
HEAT TREATMENT		DECIMAL	
FIRST USED ON		DESCRIPTION	
THIRD ANGLE PROJECTION		SCALE	
UNIT OF MEAS.		DRAWING	

HURCO MANUFACTURING COMPANY, INC. INDIANAPOLIS, IN U.S.A.				
DATE	CHECKED	DATE	APPROVED	DATE
1-27-83	JLW	1-27-83	JLW	2-25-83
DRAWN		DESCRIPTION		
GLH		ASSY, GAUGE S7 AB7		
SCALE		SIZE		
1=2		D		
DRAWING		REV.		
001-2003-002		2		
OF		2		