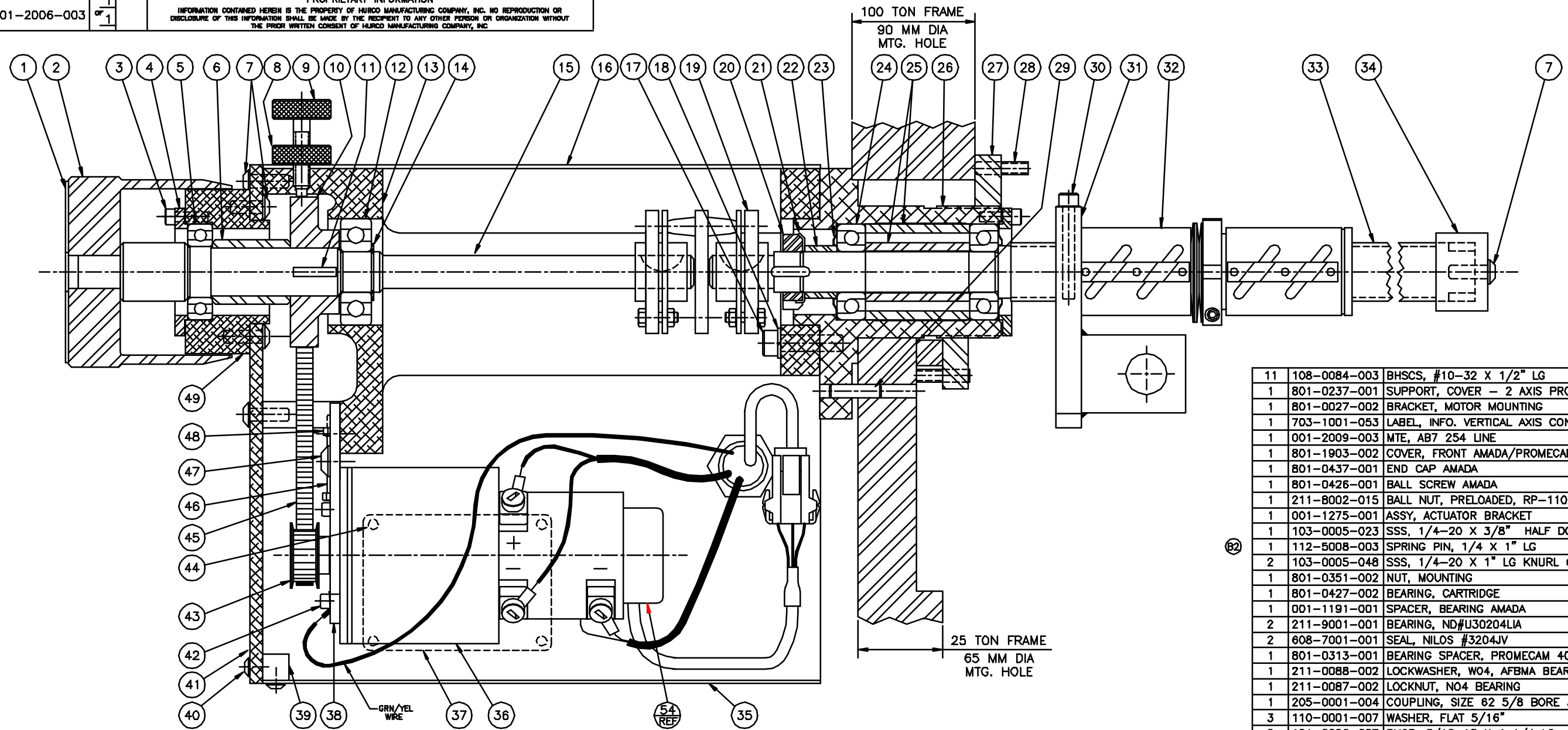


PROPRIETARY INFORMATION
 INFORMATION CONTAINED HEREIN IS THE PROPERTY OF HURCO MANUFACTURING COMPANY, INC. NO REPRODUCTION OR DISCLOSURE OF THIS INFORMATION SHALL BE MADE BY THE RECIPIENT TO ANY OTHER PERSON OR ORGANIZATION WITHOUT THE PRIOR WRITTEN CONSENT OF HURCO MANUFACTURING COMPANY, INC.



11	108-0084-003	BHSCS, #10-32 X 1/2" LG	40
1	801-0237-001	SUPPORT, COVER - 2 AXIS PROMECAM	39
1	801-0027-002	BRACKET, MOTOR MOUNTING	38
1	703-1001-053	LABEL, INFO. VERTICAL AXIS CONTROL	37
1	001-2009-003	MTE, AB7 254 LINE	36
1	801-1903-002	COVER, FRONT AMADA/PROMECAM 400 AB20	35
1	801-0437-001	END CAP AMADA	34
1	801-0426-001	BALL SCREW AMADA	33
1	211-8002-015	BALL NUT, PRELOADED, RP-1105	32
1	001-1275-001	ASSY, ACTUATOR BRACKET	31
1	103-0005-023	SSS, 1/4-20 X 3/8" HALF DOG BRASS PT.	30
1	112-5008-003	SPRING PIN, 1/4 X 1" LG	29
2	103-0005-048	SSS, 1/4-20 X 1" LG KNURL CUP PT	28
1	801-0351-002	NUT, MOUNTING	27
1	801-0427-002	BEARING, CARTRIDGE	26
1	001-1191-001	SPACER, BEARING AMADA	25
2	211-9001-001	BEARING, ND#U30204LIA	24
2	608-7001-001	SEAL, NILOS #3204JV	23
1	801-0313-001	BEARING SPACER, PROMECAM 400	22
1	211-0088-002	LOCKWASHER, W04, AFBMA BEARING	21
1	211-0087-002	LOCKNUT, N04 BEARING	20
1	205-0001-004	COUPLING, SIZE 62 5/8 BORE 3/16 K	19
3	110-0001-007	WASHER, FLAT 5/16"	18
2	101-0006-007	SHCS, 5/16-18 X 1 1/4 LG	17
1	801-2003-002	COVER, REAR AMADA/PROMECAM 400 AB7	16
1	801-0310-001	SHAFT, PROMECAM DRIVE	15
1	113-0002-014	RETAIN. RING, EXT BASIC .78 DIA	14
1	801-0300-002	PROMECAM 2-AXIS FRAME CASTING	13
1	211-0009-012	RADIAL BEARING, ND#77604	12
3	609-0001-019	KEY, WOODRUFF #807	11
1	208-0002-008	SPROCKET 48XL037	10
1	604-0001-004	SCREW, VILER #AHS-312A	9
1	604-0001-003	MCS-312 SCREW CHECK NUT	8
6	108-0005-004	BHSCS, 1/4-20 X 3/4 LG	7
1	801-0327-001	SPACER	6
1	211-0009-013	BEARING, ND#773L05	5
2	801-0326-001	RETAINER, BEARING	4
6	101-0084-003	SHCS, #10-32 X 5/8 LG	3
1	801-0223-003	DIAL	2
1	703-0003-006	LABEL, L.H.	1

REF	416-0248-054	ENCODER, 254 LINE DIFF.	54
1	423-0201-011	HARNESS, AB7 Y-AXIS IF	53
1	404-5202-012	MICRO SWITCH	52
1	801-2002-003	BRACKET, UPACTING LIMIT SWITCH MOUNT	51
1	103-5128-026	SSS, M6 X 25MM LONG	50
1	801-0315-001	SLEEVE - PROMECAM 406	49
1	117-0005-015	HEX NUT, #10-32	48
2	108-0006-004	BHSCS, 5/16-18 X 3/4" LG	47
1	105-0084-008	HHCS, #10-32 X 1 1/2" LG	46
1	204-0002-004	BELT, TIMING #190XL037	45
4	111-0241-001	RIVET, #AD-32-ABS SCOVIL	44
1	208-0002-001	SPROCKET, 30XLM037 1/2" BORE	43
4	101-0003-004	SHCS, #8-32 X 5/8 LG	42
1	801-0160-003	COVER, END - PROMECAM 2 AXIS AB20	41

NOTES:
 1) CW ROTATION IS DOWN DIRECTION.
 2) ITEMS 29, 50, 51, 52 AND 53 NOT SHOWN.
 USED AT INSTALLATION.

SURFACE TREATMENT 	EXCEPT AS NOTED: ALL DIMENSIONS IN INCHES TOLERANCE DECIMAL 0 ± 0.000 .00 ± 0.010 .000 ± 0.005 .0000 ± 0.0005 ANGULAR ±0°30' BREAK ALL SHARP EDGES	HURCO MANUFACTURING COMPANY, INC. INDIANAPOLIS, IN U.S.A.
HEAT TREATMENT 	DESCRIPTION ASSY, AMADA DRIVE, AB7	DRAWN GLH
FIRST USED ON AB7	SCALE 1=1 UNIT OF MEAS. EA.	DATE 1-13-93
D 13612 ADDED ITEM 54 C 13341 ADDED ITEM 53 B 12543 1) DELETE 4PC 108-5001-003, 2) WAS REF, 3) ADD ITEMS 50 THRU 52	CHECKED KLP	DATE 1-13-93
REV. DATE BY DATE BY DATE	APPROVED JLW	DATE 2-28-93