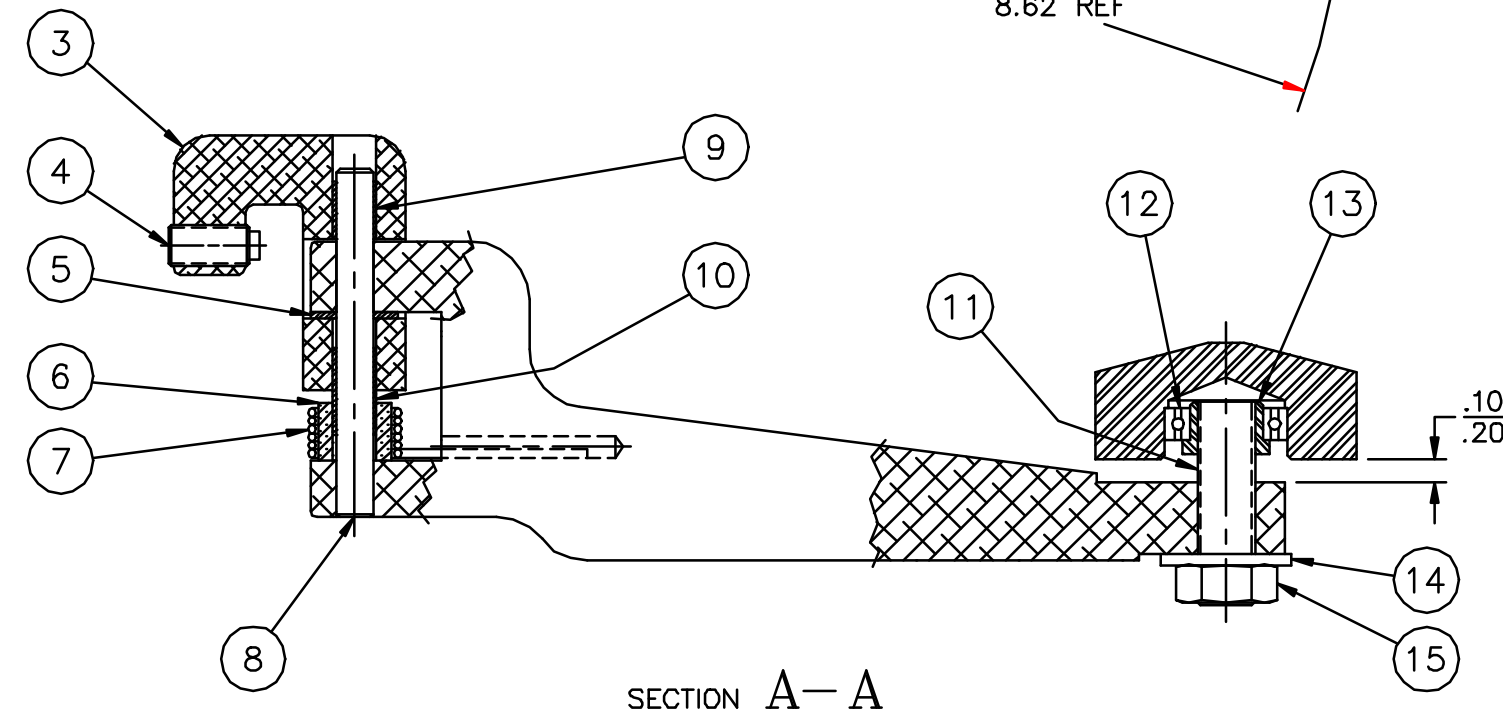


NOTE:
ASSEMBLE ITEM 14 TO ITEM 11 WITH #271 LOCTITE.



SECTION A-A

QTY.	PART NUMBER	ITEM DESCRIPTION	ITEM
1	117-0002-005	HEX NUT, 1/2-13	15
1	110-0002-005	FLAT WASHER, 1/2 NOM ID	14
1	801-0241-001	SHAFT, SUPPORT STOCK BEARING	13
1	211-0015-009	BEARING, MRC B538ZZ	12
1	103-0009-036	SSS, 1/2-13 X 1 3/4" LG	11
REF	211-7016-001	BEARING, OILITE AA-306-6 3/4" LG	10
REF	211-7016-002	BEARING, OILITE AA-306-7 1/2" LG	9
1	112-6001-003	GROOVE PIN, TYPE 24 .312 DIA X 3" LG.	8
1	801-0240-001	SPRING, STOCK SUPPORT	7
1	211-7026-001	BEARING, OILITE AA630-11 X 1/2" LG.	6
1	211-7203-002	BEARING, THRUST 3/8" ID	5
1	604-0821-001	CLAMP, SWIVEL PAD	4
1	801-0239-001	SUPPORT, STOCK MOUNTING	3
1	801-0242-002	WHEEL, 2 1/4" DIA	2
1	801-0238-001	SWING ARM	1

REV	P.L.N. NO.	REVISION DESCRIPTION	REV	DATE	CHK BY	DATE	APP BY	DATE	DF
E	14743	REDRAWN TO CAD WITHOUT CHANGES	JW	8/24/99	SD	8/25/99	JW	8/25/99	

SURFACE TREATMENT	EXCEPT AS NOTED: ALL CORNERS MUST BE AS FOLLOWS	EXCEPT AS NOTED: ALL DIMENSIONS IN INCHES TOLERANCE	HURCO MANUFACTURING COMPANY, INC. INDIANAPOLIS, IN U.S.A.			
HEAT TREATMENT	INSIDE: .050" X 45° OR .05" R MAX OUTSIDE: .030" X 45° OR .05" R	DECIMAL .0 ±.0300 .00 ±.0150 .000 ±.0050 .0000 ±.0005 ANGULAR ± 0'30"	DESCRIPTION ASSY, STOCK SUPPORT			
FIRST USED ON	EXCEPT AS NOTED: WELDING TOLERANCE MUST BE AS FOLLOWS ±.12	THIRD ANGLE PROJECTION	SCALE 1:1	SIZE C	DRAWING 001-1146-001	DRAWN STRANG DATE 6/28/79 CHECKED G.B. DATE 6/30/79 APPROVED J.N. DATE 7/79
AUTOBEND			UNIT OF MEAS. EA			SHT. 1 OF 1 REV. E