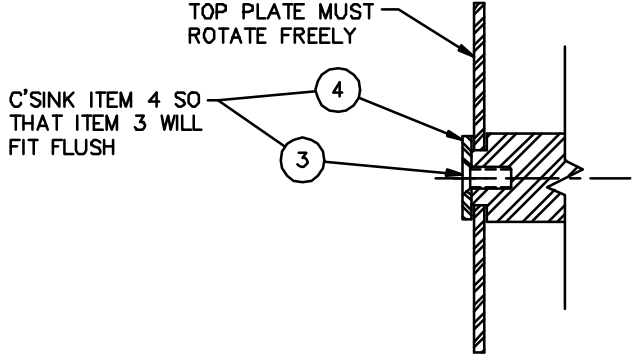
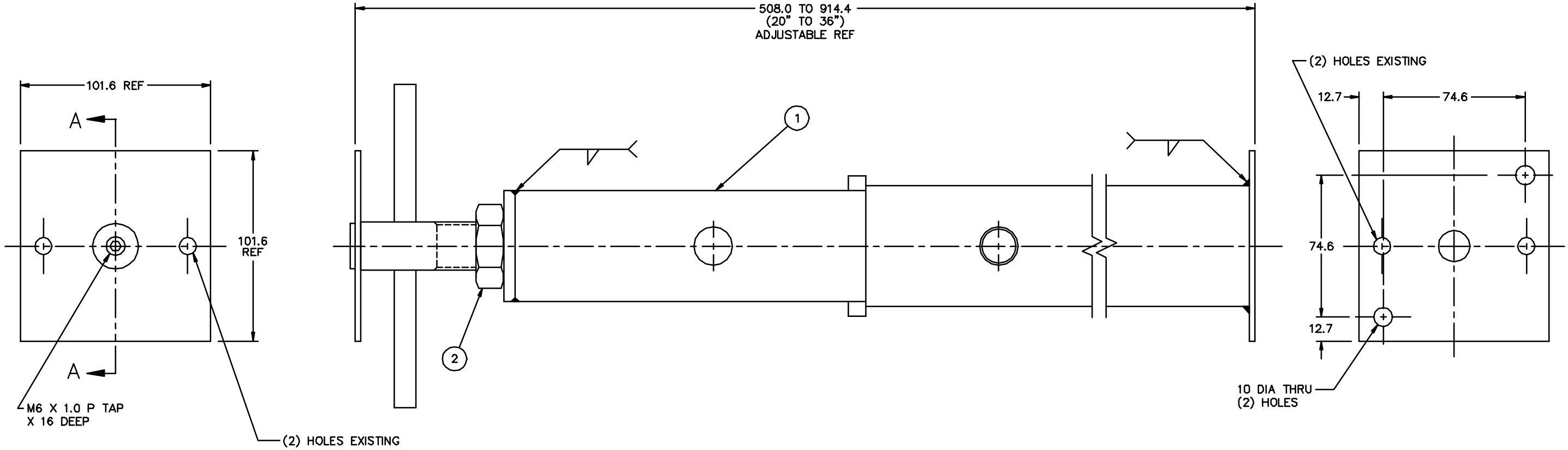


PROPRIETARY INFORMATION
 INFORMATION CONTAINED HEREIN IS THE PROPERTY OF HURCO MANUFACTURING COMPANY, INC. NO REPRODUCTION OR DISCLOSURE OF THIS INFORMATION SHALL BE MADE BY THE RECIPIENT TO ANY OTHER PERSON OR ORGANIZATION WITHOUT THE PRIOR WRITTEN CONSENT OF HURCO MANUFACTURING COMPANY, INC.



SECTION A-A

NOTE:
 CLEAN, PRIME WITH 701-0002-008 GRAY PRIMER.
 PAINT WITH CARBIDE BLACK 701-0001-040.
 SEE HURCO PAINT SPECIFICATION 716-7025-001.
 SURFACE FINISH CLASS "C".

QTY.	PART NUMBER	ITEM DESCRIPTION	ITEM
1	110-5001-007	WASHER, FLAT M12	4
1	102-5004-003	FHSCS, M6 X 1.0 P X 12 LG	3
1	117-0002-010	HEX NUT, 1"-8 JAM	2
1	601-0001-007	ADJUSTABLE, FLOOR JACK	1

SURFACE TREATMENT SEE NOTE 	EXCEPT AS NOTED ALL DIMENSIONS MUST BE AS FOLLOWS INSIDE: 1.3 X 45° OR 1.3 R MAX OUTSIDE: 0.8 X 45° OR 1.3 R	EXCEPT AS NOTED ALL DIMENSIONS IN METRIC TOLERANCE DECIMAL .0 ±0.0 .00 ±0.4 .000 ±0.13 .000 ±0.013 ANGULAR ± 0°30'	HURCO MANUFACTURING COMPANY, INC INDIANAPOLIS, IN U.S.A.
THIRD ANGLE PROJECTION MUST BE AS FOLLOWS 		SCALE 1=1 UNIT OF MEAS EA	DESCRIPTION ASS'Y, ADJUSTABLE LEG DRAWN DRA DATE B-22-94 CHECKED JLW DATE 8-23-94 APPROVED DATE DRIVING 901-0022-004 SH. 1 OF 1 REV.